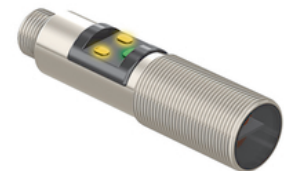
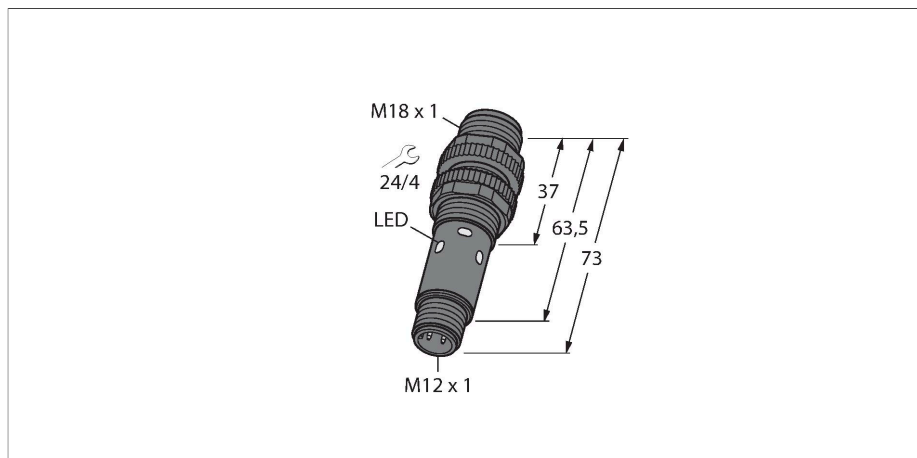


M18-3VPDL-Q8

Photoelectric Sensor – Diffuse-Mode Sensor



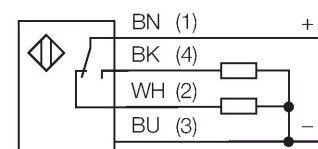
Technical data

Type	M18-3VPDL-Q8
ID	3088322
Optical data	
Function	Proximity switch
Operating mode	Diffuse
Light type	Red
Wavelength	624 nm
Range	1...750 mm
Electrical data	
Operating voltage	10...30 VDC
No-load current	≤ 16 mA
Short-circuit protection	yes / Cyclic
Reverse polarity protection	yes
Output function	Complementary contact, PNP
Readiness delay	≤ 100 ms
Response time typical	< 1.5 ms
Setting option	Potentiometer
Mechanical data	
Design	Tube, M18
Dimensions	Ø 18 x 73 mm
Housing material	Metal, Nickel-plated brass
Lens	Acrylic
Electrical connection	Connector, M12 × 1, PVC
Number of cores	4
Ambient temperature	-40...+70 °C
Protection class	IP67 IP69

Features

- M12 × 1 male connector, 4-pin
- Protection classes IP67/IP69K
- Ambient temperature: -40...+70° C
- Operating voltage: 10...30 VDC
- PNP switching output, changeover

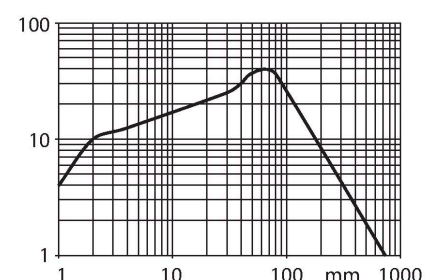
Wiring diagram



Functional principle

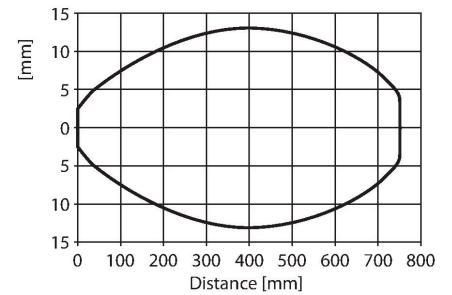
Emitter and receiver are incorporated in the same housing. The light reflected by the target is detected and causes the sensor to switch. The switching distance thereby depends largely on the reflectivity of the target.

Excess Gain Curve



Technical data

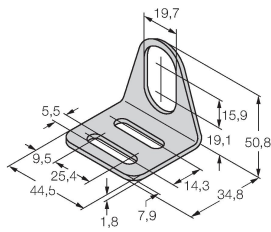
Special features	Wash down
Power-on indication	LED, Green
Switching state	2 × LEDs, Yellow
Error indication	Flashing
Excess gain indication	LED
Alarm display	Flashing
Tests/approvals	
Approvals	CE, cULus



Accessories

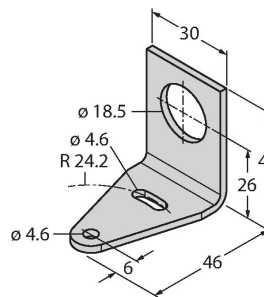
MW-18 6945004

Mounting bracket for threaded barrel sensors; material: Stainless steel A2 1.4301 (AISI 304)



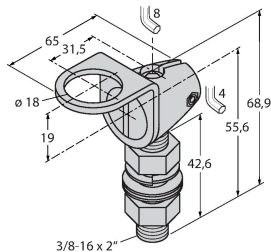
SMB18A 3033200

Mounting bracket, rectangular, stainless steel, for sensors with 18 mm thread



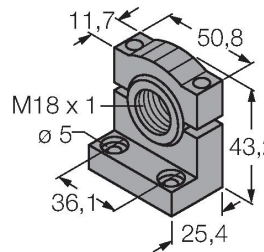
SMB18FAM10 3011184

Mounting bracket, material VA 1.4401, for M10 x 1.5 thread, thread length 18 mm



SMB18SF 3052519

Mounting bracket, PBT black, for sensors with 18 mm thread, rotatable



SMBS18-2-1 3085931

Accessories

Dimension drawing	Type	ID	
	RKH4.4-2/TFG	6933086	Connection cable, M12 female, straight, 4-pin, stainless steel coupling nut, cable length: 2 m, jacket material: TPE, gray temperature range -40...+105 °C; other cable lengths and designs available, see www.turck.com
	WKH4.4-2/TFG	6933093	Connection cable, M12 female, angled, 4-pin, stainless steel coupling nut, cable length: 2 m, jacket material: TPE, gray temperature range -40...+105 °C; other cable lengths and designs available, see www.turck.com

Dimension drawing	Type	ID	
	RKC4.4T-2/TEL	6625013	Connection cable, female M12, straight, 4-pin, cable length: 2 m, sheath material: PVC, black; cULus approval; other cable lengths and qualities available, see www.turck.com
	WKC4.4T-2/TEL	6625025	Connection cable, female M12, angled, 4-pin, cable length: 2 m, sheath material: PVC, black; cULus approval; other cable lengths and qualities available, see www.turck.com