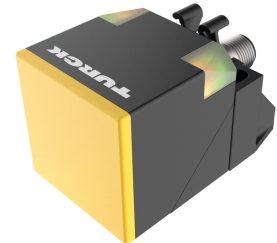
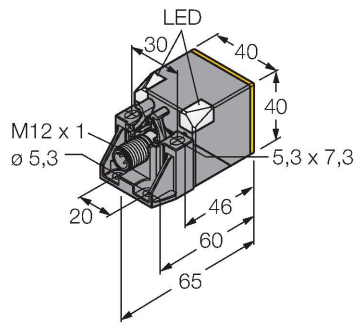


NI40UE-QV40-VN6X2-H1141

Inductive Sensor – With Extended Switching Distance



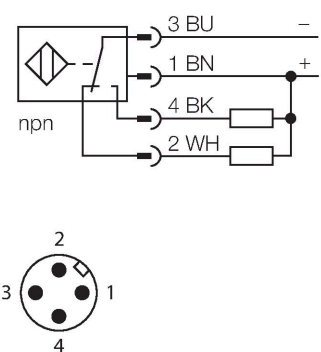
Technical data

Type	NI40UE-QV40-VN6X2-H1141
ID	100032302
General data	
Rated switching distance	40 mm
Mounting conditions	Non-flush
Secured operating distance	$\leq (0.81 \times S_n)$ mm
Repeat accuracy	$\leq 2 \%$ of full scale
	$\leq \pm 20 \%, \leq -25^\circ\text{C} \vee \geq +70^\circ\text{C}$
Hysteresis	3...15 %
Electrical data	
Operating voltage U_B	10...30 VDC
Ripple U_{ss}	$\leq 10 \%$ U_{Bmax}
DC rated operating current I_o	≤ 200 mA
No-load current	≤ 15 mA
Residual current	≤ 0.1 mA
Isolation test voltage	0.5 kV
Short-circuit protection	yes/Cyclic
Voltage drop at I_o	≤ 1.8 V
Wire break/reverse polarity protection	yes/Complete
Output function	4-wire, Complementary contact, NPN
DC field stability	300 mT
AC field stability	300 mT _{ss}
Switching frequency	0.25 kHz
Mechanical data	
Design	Rectangular, QV40
Dimensions	65 x 40 x 40 mm

Features

- Rectangular, height 40 mm
- Plastic, PBT-GF30-V0
- High luminance corner LEDs
- Optimum view on supply voltage and switching state from any position
- Factor 1 for all metals
- Increased switching distance
- Protection class IP68
- Resistant to magnetic fields
- DC 4-wire, 10...30 VDC
- Changeover contact, NPN output
- M12 x 1 male connector

Wiring diagram



Functional principle

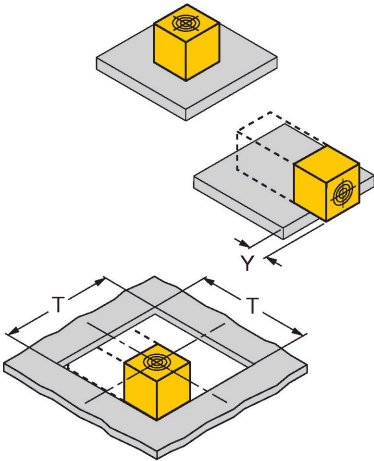
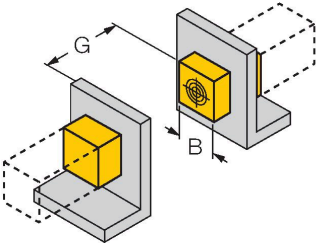
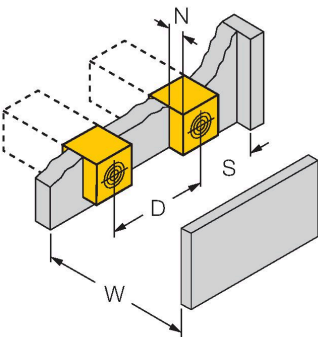
Inductive sensors are designed for wear-free and contactless detection of metal objects. uprox+ sensors have significant advantages due to their patented multi-coil system. They excel thanks to their optimum switching distances, maximum flexibility and operational reliability as well as efficient standardization.

Technical data

	variable orientation of active face in 5 directions
Housing material	Plastic, PBT-GF30-V0, Black
Active area material	Plastic, PA6-GF30-X, yellow
Electrical connection	Connector, M12 × 1
Environmental conditions	
Ambient temperature	-30...+85 °C
Vibration resistance	55 Hz (1 mm)
Shock resistance	30 g (11 ms)
Protection class	IP68
MTTF	874 years acc. to SN 29500 (Ed. 99) 40 °C
Power-on indication	2 × LEDs, Green
Switching state	2 × LEDs, Yellow
Included in delivery	Fixing clamp for QV40

Mounting instructions

Mounting instructions/Description



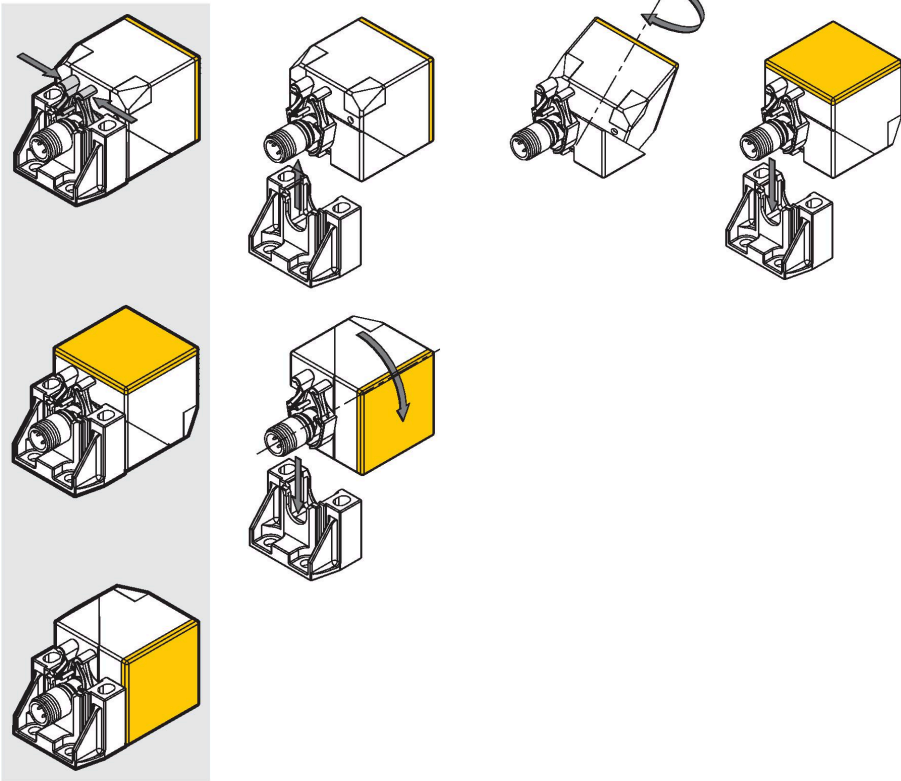
Distance D	240 mm
Distance W	120 mm
Distance T	100 mm
Distance S	60 mm
Distance G	240 mm
Distance N	40 mm
Width active area B	40 mm

Protruded mounting:
y = 20 mm: Sr = 40 mm
y = 30 mm: Sr = 40 mm
y = 40 mm: Sr = 40 mm

Mounting position in aperture plate: T = 100 mm:
Twisted mounting position
On metal Sr = 40 mm

The active face of the sensor can be aligned in 5 directions without tools and using only one hand.

Squeeze the bracket to release the sensor from the mounting bracket. Now, align the sensor with the active face pointing in the desired direction. Then, snap the sensor back into the bracket. The sensor is now securely locked in position.



Accessories

BSS-CP40

6901318

Mounting clamp for rectangular housings 40 x 40 mm; material: Polypropylene

