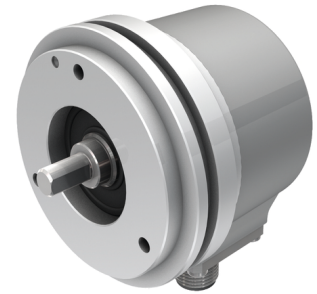
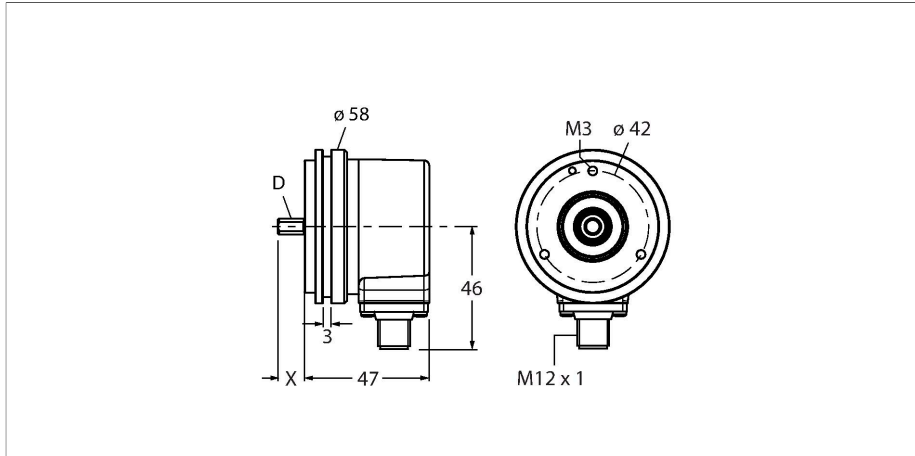


REI-10S10S-2B3600-H1181

Incremental Encoder

Industrial Line



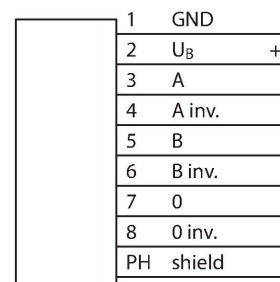
Technical data

Type	REI-10S10S-2B3600-H1181
ID	100010303
Measuring principle	Optical
General data	
Max. rotational speed	6000 rpm
Moment of inertia of the rotor	$1.8 \times 10^{-5} \text{ kgm}^2$
Starting torque	< 0.05 Nm
Output type	Incremental
Resolution incremental	3600 ppr
Electrical data	
Operating voltage U_B	10...30 VDC
No-load current	$\leq 100 \text{ mA}$
Output current	$\leq 30 \text{ mA}$
Short-circuit protection	yes
Wire break/reverse polarity protection	yes
Pulse frequency max.	300 kHz
Signal level high	min. $U_B - 1 \text{ V}$
Signal level low	max. 0.5 V
Output function	Push-Pull/HTL, invertable
Mechanical data	
Flange type	Synchro flange
Flange diameter	$\text{Ø } 58 \text{ mm}$
Shaft Type	Solid shaft
Shaft diameter D (mm)	10
Shaft Length L [mm]	20
Shaft material	Stainless steel

Features

- Synchro flange, $\text{Ø } 58 \text{ mm}$
- Solid shaft, $\text{Ø } 10 \text{ mm} \times 20 \text{ mm}$
- Optical measuring principle
- Shaft material: stainless steel
- Protection class IP67 on housing and shaft side
- $-40 \dots +85 \text{ °C}$
- Max. 6000 rpm (continuous operation 3000 rpm)
- 10...30 VDC
- Push-pull/HTL invertible
- Pulse frequency max. 300 kHz
- M12 x 1 male connector, 8-pin
- 3600 pulses per revolution

Wiring diagram



Technical data

Housing material	Die-cast zinc
Electrical connection	Connector, M12 × 1
	8-pin
Axial shaft load	40 N
Radial shaft load	80 N
Environmental conditions	
Ambient temperature	-40...+85 °C
Vibration resistance (EN 60068-2-6)	300 m/s ² , 10...2000 Hz
Shock resistance (EN 60068-2-27)	3000 m/s ² , 6 ms
Protection class	IP67
Protection class shaft	IP67

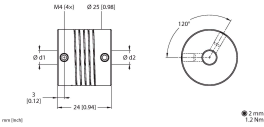
Accessories

<p>RA-BC-20-06-10</p> <p>2 mm 1.5 Nm</p>	<p>100048779</p> <p>Bellows coupling with aluminum hub Ø 20 mm; d1 = 6 mm, d2 = 10 mm</p>	<p>RA-BC-20-08-10</p> <p>2 mm 1.5 Nm</p>	<p>100048781</p> <p>Bellows coupling with aluminum hub Ø 20 mm; d1 = 8 mm, d2 = 10 mm</p>
<p>RA-BC-20-10-10</p> <p>2 mm 1.5 Nm</p>	<p>100048782</p> <p>Bellows coupling with aluminum hub Ø 20 mm; d1 = 10 mm, d2 = 10 mm</p>	<p>RA-BC-20-10-12</p> <p>2 mm 1.5 Nm</p>	<p>100048783</p> <p>Bellows coupling with aluminum hub Ø 20 mm; d1 = 10 mm, d2 = 12 mm</p>
<p>RA-BC-E-20-06-10</p> <p>2 mm 0.7 Nm</p>	<p>100048786</p> <p>Stainless steel bellows coupling Ø 20 mm; d1 = 6 mm, d2 = 10 mm</p>	<p>RA-BC-E-20-10-10</p> <p>2 mm 0.7 Nm</p>	<p>100048787</p> <p>Stainless steel bellows coupling Ø 20 mm; d1 = 10 mm, d2 = 10 mm</p>
<p>RA-BC-E-20-10-12</p> <p>2 mm 0.7 Nm</p>	<p>100048788</p> <p>Stainless steel bellows coupling Ø 20 mm; d1 = 10 mm, d2 = 12 mm</p>	<p>RA-SDC-30-10-10</p> <p>2.5 mm 1.2 Nm</p>	<p>100048792</p> <p>Spring disc coupling Ø 30 mm; d1 = 10 mm, d2 = 10 mm</p>
<p>RA-SDC-30-10-12</p> <p>2.5 mm 1.2 Nm</p>	<p>100048793</p> <p>Spring disc coupling Ø 30 mm; d1 = 10 mm, d2 = 12 mm</p>	<p>RA-HC-25-10-10</p> <p>2 mm 1.2 Nm</p>	<p>100048796</p> <p>Aluminum helix coupling Ø 25 mm; d1 = 10 mm, d2 = 10 mm</p>

RA-HC-25-10-12

100048797

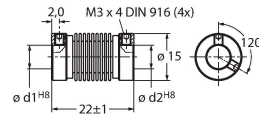
Aluminum helix coupling \varnothing 25 mm; d_1 = 10 mm, d_2 = 12 mm



RCS-15-08-06

1545361

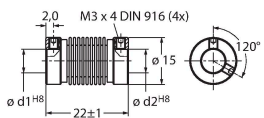
Bellows coupling, outer diameter: 15 mm, bore diameter: 8 mm/6 mm



RCS-15-06-06

1545362

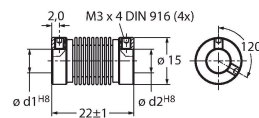
Bellows coupling, outer diameter: 15 mm, bore diameter: 6 mm/6 mm



RCS-15-06-04

1545363

Bellows coupling, outer diameter: 15 mm, bore diameter: 6 mm/4 mm



Accessories

Dimension drawing	Type	ID	
	RKC8T-2/TXL	6625142	Connection cable, M12 female connector, straight, 8-pin, cable length: 2 m, jacket material: PUR, black; cULus approval
	WKC8T-2/TXL	6625145	Connection cable, M12 female connector, angled, 8-pin, cable length: 2 m, jacket material: PUR, black; cULus approval